



**Commercial and Residential Contractor Since 1936**

---

**September 2019 • 510.444.2723**

---

Hello, {FIRST\_NAME|Valued Customer}:

Extreme weather conditions over the last few years have contributed to the fires that have destroyed too many homes and lives. The tragedies are endless, the stories heartbreaking.

The result is that we're all uneasy this time of year. PG&E's decision to turn off power to avoid potential fires may be the safe answer, but we are left feeling vulnerable.

Our solution? A generator. Because these weather conditions are not going away.

Call us for a free consultation,



Jocelyn Newell, General Manager

---

**Generator Installation Program**



We are all concerned about what will happen if PG&E turns off our power for 3-5 days at a time. Winter also brings storms with high winds that can topple trees and cause power outages. How will these outages affect:

- Family members who may require access to electronic medical equipment?
- Expensive landscaping and swimming pools that depend on electricity for irrigation and pool maintenance?
- Those who work from home and require access to online applications?

With your own generator, you can continue working and keep your home and family safe and secure. We evaluate your needs and identify the generator that is the right fit for your property and your family.

### **We are the single point of contact on your project**

W.A. Rose manages the project, including getting the permit. We also can build a structure to fit around your generator to help it fit into your landscaping.

---

# Why Work with W.A. Rose?

## Reliable Service. On Time, On Budget

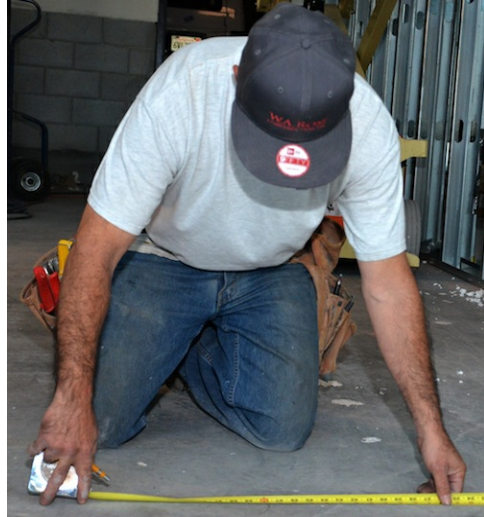
A high level of professionalism, ability to maintain schedules and manage costs. Worksites are organized, clean and skillfully run.

## Skilled Craftsmanship. Pride in Quality Work

Experienced, trained craftsmen are recognized for skill and attention to detail.

## Responsive Customer Service

Ability to adapt our services and schedules to meet client needs.



## SLBE Oakland Certification

A Small Local Business Enterprise (SLBE) with the City of Oakland, County of Alameda and Port of Oakland.

We're reinvesting in our local economy.

**This is the perfect time to be thinking about  
a home refresh for holiday entertaining**

Call today for a consultation: **510.444.2723**



**510.444.2723 • [info@warose.com](mailto:info@warose.com) • [warose.com](http://warose.com)**

482 25th Street, Oakland, CA 94612 • Lic.#: 919984

If you no longer wish to receive these emails, please reply to this message with "Unsubscribe" in the subject line or simply click on the following link: [Unsubscribe](#)

---

W.A. Rose Construction  
482 25th Street, Oakland, CA 94612  
Oakland, CA 94612  
US

[Read](#) the VerticalResponse marketing policy.

